

# Brief Introduction

---

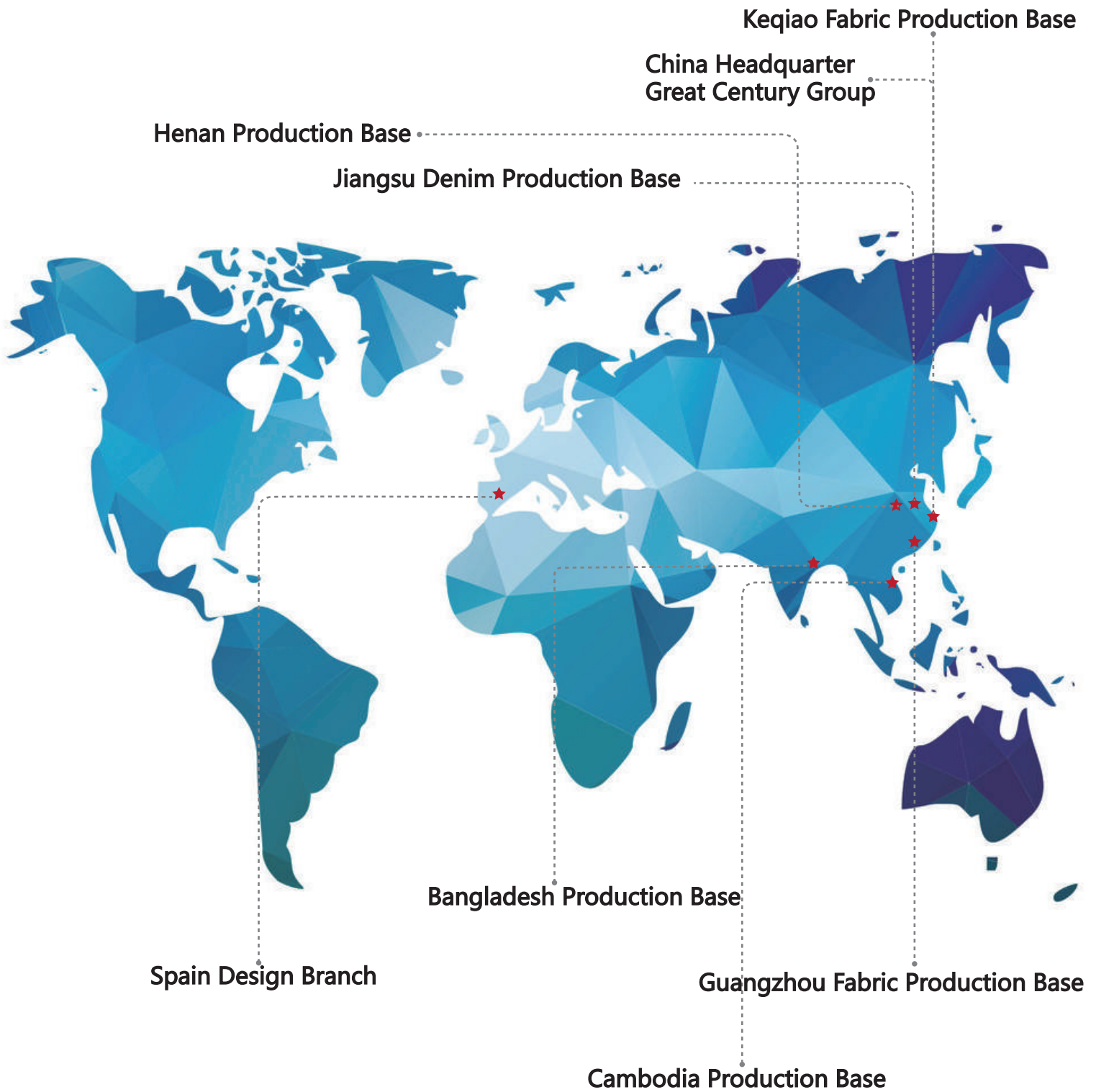
Founded in 2011, GREAT CENTURY GROUP is thriving to be the world' s leading manufacturer and exporter in textile and garment industry. There are three subsidiaries under GREAT CENTURY GROUP. Two in China, who put their efforts into the R&D of textiles and garments and one in Spain, who' s dedicated to creating latest patterns and trendy styles.

With more than 8 years experience in textile and garment making, we are motivated, pragmatic innovative and service-oriented. We will continue to expand our products range and improve our service. And we are determined to become the leading modern and international textile and garment group with the ability to create continuing value.



# Global Layout

---

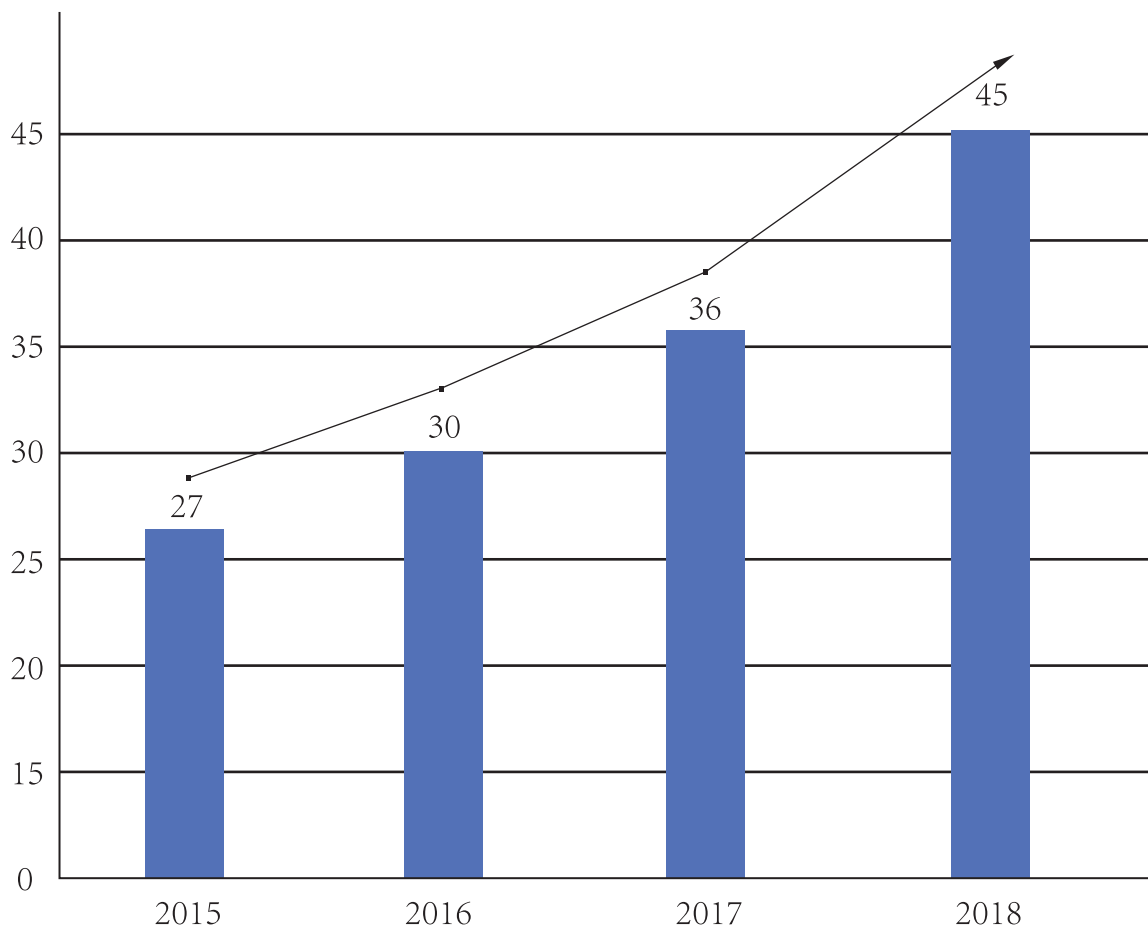


# Garment Business Performance

---

We have a team of designers catering to customers' requirements with their outstanding, experienced and professional skills, and being informed of the latest market trend and the most fashionable style and fabric in western countries.

By their efforts, over 150 internationally popular fashions are being researched and developed each month, 40 of tops, 30 of dresses, 40 of pants, 20 of jackets and 60 of jersey.



Export Volume  
Unit : million USD

# R&D Platform

---



**Fashion Design**



**Sample Development**



**Fabric R&D**

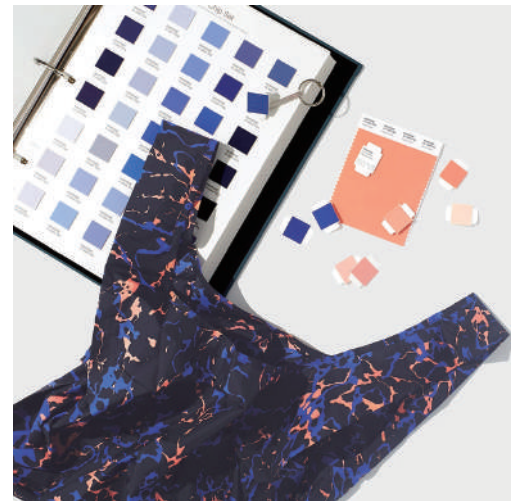
# Spain Design Branch

---

Our focus is on the research, analysis And delivery of relevant trend stories, with original printed artworks that inspire color, print, and pattern development.

We have a team of 10 designers working in our studio developing macro trends, color inspiration, prints, garment design and runway recaps.

Our designs are inspired by our trends research and we develop original designs for every client.



# Sample Development

---



- Modern garment technology R&D center
- Intelligent CAD software for garment production and operation
- Efficient and integrated garment cutting equipment system
- Standard models used by key clients
- International first-class equipment



# Fabric R&D

## Keqiao Fabric Production Base

Keqiao Fabric Production Base is always a great support not only for woven and knitting fabrics but also the design of different garments.

## Guangzhou Fabric Production Base

Guangzhou Fabric Production Base is set to explore new fabrics and provide the latest analysis of material trend.



# Manufacturing in Global

---

To realize multinational manufacturing and take advantage of different regions, GREAT CENTURY GROUP has its production bases in different parts of the world. By combining both of the advantages to manufacture domestically and in South Asia, we are able and confident to provide a customer-oriented and market-oriented service.



**Shaoxing,China**



**Keqiao,China**



**Guangzhou Fabric Production Base**



**Henan,China**



**Cambodia Production Base**

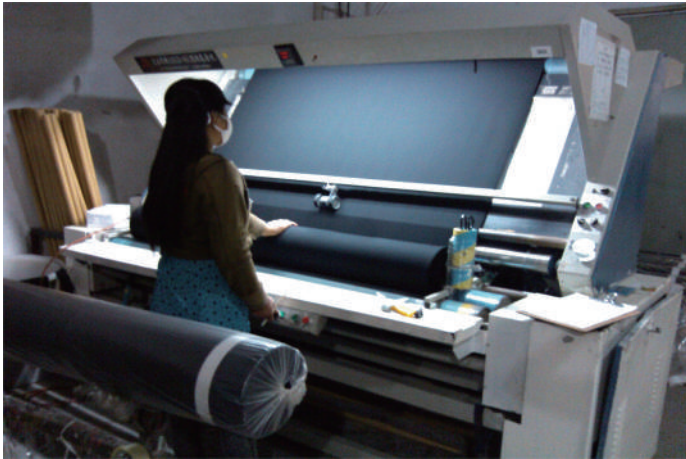


**Bangladesh Production Base**



# Inspection center & testing center

---



GREAT CENTURY GROUP locates its inspection and testing center in Shaoxing, Zhejiang. It's applied to professional inspection, integration and shipment of fabrics. It's well equipped and we adopt the international common inspection standards.



In addition to inspection center, our testing center has been launched to adopt international common testing standards and cover a wide range testing of textile and fabric.



## Our Clients

**INDITEX**

**Jennyfer**

**RESERVED**

NEW  
LOOK

**SPRINGFIELD**

*Man & Woman*

**CORTEFIEL**

**PEACOCKS**

**kik**

**promod**

Eram

# QA&CSR

We follow the general social values and business ethnics. While creating values for the world,we pay back the society from different aspects. Our facilities have passed social and quality audits by many world-class famous brands owners or their auditing agents.



International Labour Organization



# Environmental protection, &renewable

With the continuous development of globalization. We follow the trend of The Times and take the initiative to assume social responsibilities. Actively advocate the application of organic cotton and recycled polyester in clothing.



**ECO CIRCLE FIBER**

are the polyester fibers made by ECO CIRCLE™ recycling system. Compared with the polyester fibers made by traditional technology, ECO CIRCLE™ FIBERS can reduce approximate 50% of energy consumption and carbon dioxide emissions

The logo for ECO CIRCLE FIBERS shows a dashed outline of a shirt with the text 'ECO CIRCLE™ FIBERS' and a circular arrow icon.

Pure Recycled Environmental Protective Materials

The logo for JIAREN features a stylized flower-like icon followed by the text 'JIAREN NEW MATERIALS'.

The logo for Global Recycled Standard, featuring a globe and arrows.

The logo for OEKO-TEX MADE IN GREEN, including the text 'OEKO-TEX® MADE IN GREEN' and 'www.madeingreen.com'.

The logo for Intertek, featuring the text 'intertek Total Quality Assured.'.

The logo for Green Fiber, featuring a green leaf with 'GF' and the text '绿色纤维 GREEN FIBER'.

The logo for GOTS (Global Organic Textile Standard) features a white shirt icon inside a green circle, surrounded by the text 'GLOBAL ORGANIC TEXTILE STANDARD' and 'GOTS'.

WOMAN WOMAN WOMAN



WOMAN WOMAN WOMAN



YOUNG YOUNG YOUNG

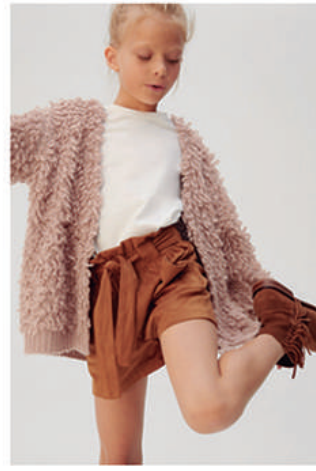


YOUNG YOUNG YOUNG

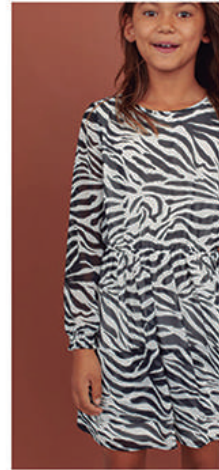




# KIDS KIDS KIDS



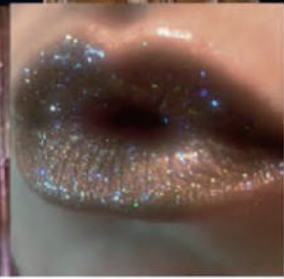
KIDS KIDS KIDS



# AW20/21 COLLECTION



Acne Studios



**G** GREAT  
CENTURY  
GROUP



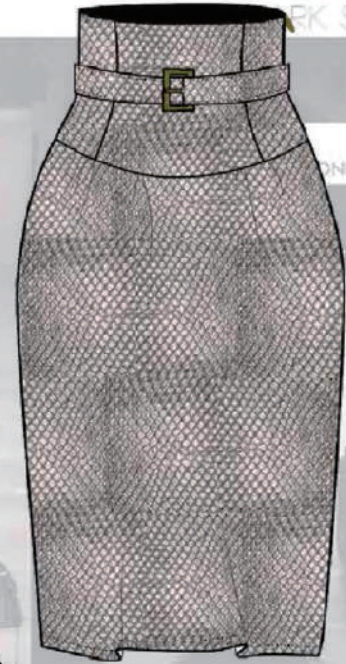


PU Leather black color



Ref: 0260

PU Leather black color



Ref: 0259

Alexander Wang Flower Print

Materials: Lace, leather, satin, georgette...

This is the season of monochromatic looks. From top to bottom only one color, like black, to achieve an elegant and discreet look. Black lace mixed with leather, pleated satin & sparkling fabrics. Touch of gold in details or accessories.

WOVEN



Ref: 0257



Ref: 0256



Ref: 0258

Alexander Wang Flower Print

Materials: Lace, leather, satin, georgette...

This is the season of monochromatic looks. From top to bottom only one color, like black, to achieve an elegant and discreet look. Black lace mixed with leather, pleated satin & sparkling fabrics. Touch of gold in details or accessories.

WOVEN

STUDIO 54



It was essentially a tribute to disco dressing and nostalgic moments that felt very of the moment of Studio 54 and a bevy of other New York centric scenes from the glamorous 1970s. Diva dresses and shiny fabrics and platforms.

Materials: Velvel, sequins, satin,...



STUDIO 54



PANTONE 18-1340 TCX

Ref: 0278

PANTONE 19-3864 TCX

BLACK FAUX LEATHER

PANTONE 19-3864 TCX

PANTONE 19-3864 TCX



Ref: 0274

SATIN



It was essentially a tribute to disco dressing and nostalgic outfits that felt very of the moment. Ref: 0277 5-1 and a bevy of other New York-centric scenes from the glamorous 1970s. Diva dress platforms.

SILVER FALSE LEATHER

WOVEN

STUDIO 54

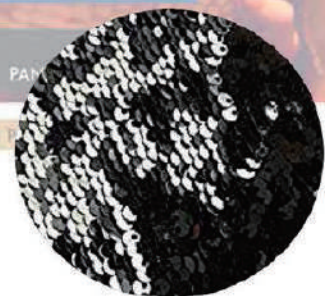


Ref: 0276

BLACK SEQUINS

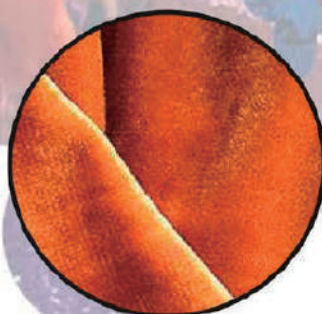
PANTONE 19-3864 TCX

PANTONE 19-3864 TCX



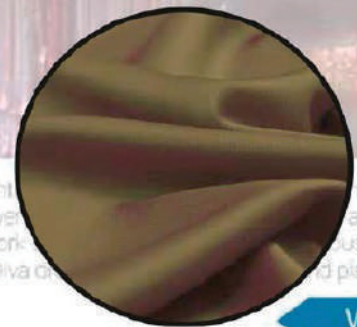
Ref: 0275

VELVET



Ref: 0279

SATIN



It was essentially a tribute to disco dressing and nostalgic outfits that felt very of the moment. Ref: 0277 5-1 and a bevy of other New York-centric scenes from the glamorous 1970s. Diva dress platforms.

WOVEN

RICH BOHEMIAN GIRL



- PANTONE 18-4217 TCX
- PANTONE 17-1450 TCX
- PANTONE 16-1532 TCX
- PANTONE 12-1110 TCX
- PANTONE 15-1046 TCX
- PANTONE 19-5220 TCX
- PANTONE 19-3911 TCX
- PANTONE 11-0607 TCX



Acne Studios

Neoclassic and exotic style sense for an alternative boemian girl. Warm and feminin palette of colors, flower bouquet prints, touch of shiny fabrics, and satin jaquards,...

ROMANTIC BLUSON & DRESS



Zara

Chloé

Mango



VELVET AND VELVET FLOWERS

Luisa Beccaria

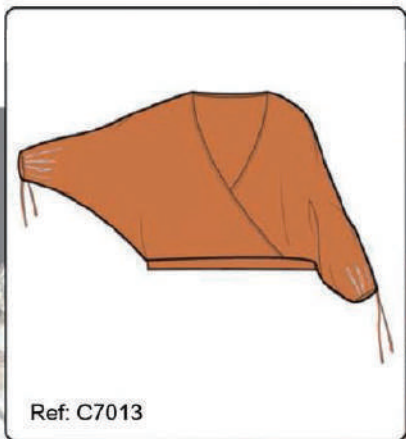
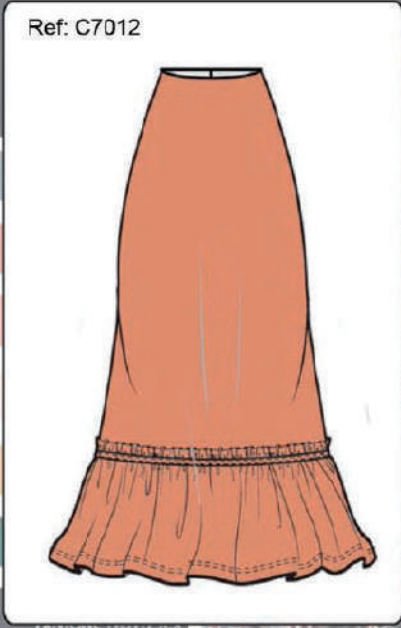


Chloé

Dandara



RICH BOHEMIAN GIRL



Neoclassic and exotic style sense for an alternative bohemian style. Warm and feminine palette of colors, flower bouquet prints of shiny fabrics, and satin jacquards...

RICH BOHEMIAN GIRL



Neoclassic and exotic style sense for an alternative bohemian style. Warm and feminine palette of colors, flower bouquet prints of shiny fabrics, and satin jacquards...

WOVEN

RICH BOHEMIAN GIRL

BLOUSE



Reference 0292  
Print ref: GC 0372

BLOUSE



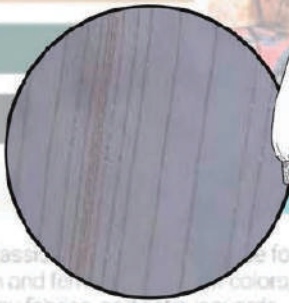
Reference 0293

SHORT

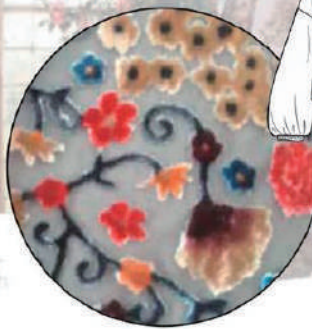


Reference 0294

METAL GOLD THREAD



BURN OUT ( VELVET )



VELVET BLACK TEXTURE



Neoclassical style for an alternative bohemian girl. Warm and lively colors, flower bouquet prints, touch of shiny fabrics, and satin jacquards...

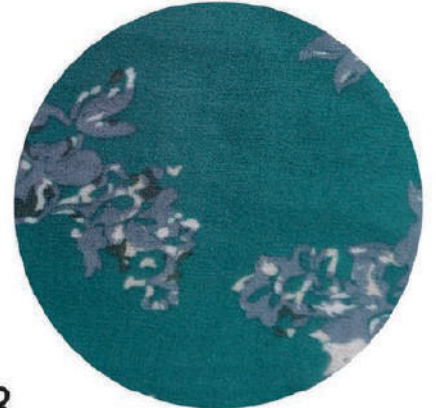
WOVEN



1



2



3



4



5



6

PRINTS

**REFERENCES:**

- Rebecca Taylor Fall/Winter 2019
- Flower silhouettes
- Mixed textures
- Natural textures inspiration.
- Embroidery flowers applications.
- Natural fabrics.

Rebecca Taylor

PANTONE 19-3911 TCX

PANTONE 18-4231 TCX

PANTONE 18-1450 TCX

PANTONE 17-1052 TCX

PANTONE 13-0946 TCX

PANTONE 15-5728 TCX

PANTONE 13-4308 TCX

PANTONE 14-3207 TCX

PANTONE 15-0719 TCX

PANTONE 11-0105 TCX

**ALL TERRAIN PRINT STORY //// TEXTURED SURFACE** AW 20/21 //// 07

**SUEDE**

**BARK TEXTURES**

**SATIN JACQUARDS**

**FLOWER REALIEFS**

**GEO SURFACE PRINTS**

S by Selena

Zara

Carolina Herrera

**ALL TERRAIN PRINT STORY //// TEXTURED SURFACE** AW 20/21 //// 07

JACKET



Ref: 0287

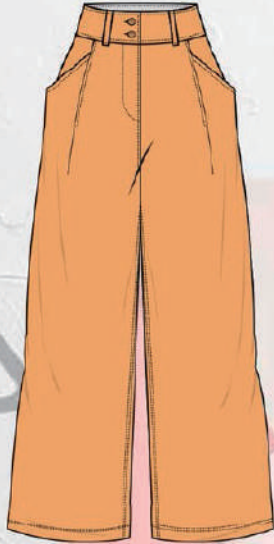
SUEDE

SHORT



Ref: 0285

CROPPED



Ref: 0284

SLOUCHY



Ref: 0286

TWILE

MIDI SKIRT



Ref: 0283

PADDED & FAUX LEATHER EFFECT



WOVEN

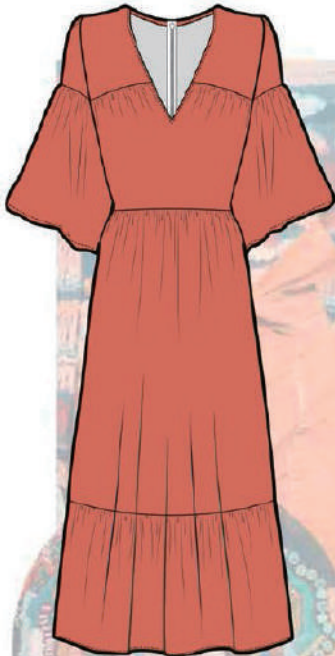
ALL TERRAIN

PRINT STORY

TEXTURED SURFACE

#W2321/01/21

DRESS



NEW PLUMETTI

Ref: 0281

DRESS



Ref: 0280

BURN-OUT FABRIC EFFECT

BLOUSE



Ref: 0282

BURN-OUT FABRIC EFFECT

JACKET



Ref: 0288

SUEDE



WOVEN

A

PRINT STORY

TEXTURED SURFACE

#W2321/01/21